

[MAG]



THE SMART ELECTRICAL ISSUE

Middy's is here as your partner, to help you and your clients navigate through the rapidly emerging world of smart electrical.

**MIDDY'S SMART CENTRES
HELP YOU GROW YOUR
BUSINESS**

**LEADING THE WAY
WITH EV CHARGING
TECHNOLOGY**

**MIDDY'S JOINS
BRAD JONES RACING
FOR 2022**

**INTRODUCING TWO
NSW BRANCHES TO
THE MIDDY'S FAMILY**

Welcome From Middy's

ISSUE #37: APR - JUN 2022

Welcome to the Smart Electrical edition of your favourite industry MAG. In this issue we're proud to showcase the latest products from our supplier partners. For example, discover easy living with the mix and match Sonos speaker. This powerful smart speaker has a built-in voice control and showcases the latest in Smart Living (page 16).

Be sure to check out the update on our Smart Centre, a finalist in the NECA Excellence Awards, to see what they have to offer (page 14) and how Middy's TechEnergy can help you and your business grow (page 13).

Middy's is pleased to announce the acquisition of PowerPlus and sees us welcome two new branches to the Middy's Family (page 30). Meet the teams at our new PowerPlus branches in Leeton and Griffith (page 32).

Lastly, don't miss your chance to win the Ultimate Fishing & Racing Experience in Darwin when you spend \$500^{+GST} on any Prysmian product in our latest competition (page 33).

From all of us here at Middy's, we hope you enjoy this latest issue of your Middy's MAG.

Nicholas Middendorp
Nicholas Middendorp

Anton Middendorp
Anton Middendorp

Specialist Services



Your Technologies & Energy Smart Partner. Dedicated support and project expertise to assist contractors expand into new business areas and open up new income streams.
P: 1800 778 823 **E:** techenergy@middys.com.au
middystechenergy.com.au



State of the art Interactive Display Centre showcasing the latest products & Technologies. Purpose built Training Facility with a range of courses and learning options for contractors.
P: (03) 9545 0755 **E:** techenergy@middys.com.au
middystechenergy.com.au



In Branch Specialised Lighting Displays to assist contractors in selecting lighting products and providing consultation for your end customers. Purchase through your wholesale trading account.
P: 0481 037 439 **E:** lighting@middys.com.au
middys.com.au/lighting



Rail Team to Rail Infrastructure and rail lines maintenance. Specialising in servicing Rail Projects with a complete range of rail specific products and accessories.
P: (03) 9568 8619 **E:** rail@middys.com.au
middys.com.au/rail



Core range of Industrial products for day to day service and a broader range of specialist industrial gear. Working to provide ongoing product solutions & support.
P: 0435 195 473 **E:** industrial@middys.com.au
middys.com.au/industrial

Contents

05 MIDDY'S 2022
SMALL BUSINESS
AWARDS

09 MIDDY'S INFO NIGHTS
VISITING NEAR YOU

10 MIDDY'S LEADING
THE WAY WITH
EV CHARGING

12 SPARKY & MIDDY'S STAFF
SPOTLIGHTS

13 MIDDY'S TECHENERGY
TEAM - HERE TO HELP

14 TECHENERGY
SMART CENTRE
OFFERING YOU MORE...

15 MIDDY'S TRAINING

17 MIDDY'S INDUSTRIAL
CASE STUDY

21 OMEGA CELEBRATES
40 YEARS

26 MIDDY'S RACING BJR:
IT'S ALL ABOUT FAMILY

30 BRANCH UPDATES:
MIDDY'S GRIFFITH
& MIDDY'S LEETON

32 MEET THE MIDDY'S
POWERPLUS TEAMS





NETATMO CAMERAS & WEATHER STATIONS



EXCEL LIFE SMART SWITCHES & SOCKETS



DOOR ENTRY SYSTEMS



SMART DOWNLIGHTS*



GALAXY

CONNECTED EMERGENCY LIGHTING SYSTEM*



ARTEOR WITH NETATMO SWITCHES & SOCKETS



LIVING NOW WITH NETATMO SWITCHES & SOCKETS



INTRODUCING ELIOT:

Legrand's connected devices programme that helps bring smart, energy-efficient buildings to life. With Eliot, Legrand is constantly innovating to make the connected home simpler to access and use with an ever-increasing choice of solutions.



*Not compatible

www.legrand.com.au

THE **GLOBAL SPECIALIST**
IN ELECTRICAL AND DIGITAL BUILDING INFRASTRUCTURES





Imagine the
power to connect
any home with Wiser™ Smart Home.

CLIPSAL®

Introducing the Clipsal Wiser™ Smart Home solution,
a simple addition to your next installation.



Easy integration
with iconic switches
and sockets.



Modular components:
build for one room or
an entire home.



Connects via Bluetooth
Low Energy or Zigbee 3.0.



Global Award-winning
smart home products.

Discover more clipsal.com/wiser-installer

Life Is On

Schneider
Electric

Middy's 2022 Small Business Awards

Designed to reward and recognise the small electrical contractors in the electrical industry, the Middy's Small Business Awards Program runs nationally 4 April - 27 May 2022.

The entry process is straight forward and uncomplicated. Simply fill out the online questionnaire. If you run a small electrical contracting business with up to 5 staff and think you deserve a break, we'd like to hear from you.

There are no right or wrong answers, we genuinely and honestly want to hear about your business and what it is about your business that makes it unique.

Prerequisites:

- ☐ Australian registered Electrical Contracting businesses with 1-5 staff
- ☐ Must be a Middendorp Group of Companies account customer of at least one year with a minimum average spend of \$5,000 a month
- ☐ Business must be trading for at least one year*

We caught up with Brendan Egings, a 2021 Middy's Small Business Award Winner to see what winning an award is all about...

Middy's: Congratulations Brendan on being a 2021 Middy's SBA winner and recipient of the \$10K Nick Middendorp SBA. Tell us a little bit about your business Egings Electrical?

Brendan: Egings Electrical is a small family run business established in 1995. In 2017 my brother Luke and I took over the business and over the past five years, we have been busy working towards building a sustainable business with the ability to grow in size and employees whilst maintaining our high standards and commitment.

As third generation electricians, keeping Egings Electrical running and growing is special to us. Our father completed his apprenticeship under my pop, I completed mine under dad and my brother Luke completed his apprenticeship under me. We hope one day to have a fourth generation take over the family business.

M: How has the Middy's Small Business Award benefitted or helped your business grow?

B: Its allowed us to pursue further business management training. We've also had some upgrades done to our work utes to utilise storage better. I would also like to complete more training and improvements to our job management software. We've previously invested in the services of an independent consultant to improve the efficiency of our job management software. The money we invested has already greatly improved our work flow but has only just scratched the surface of what we can achieve, hence we are keen to invest more time in this. There is still a lot of work to complete in the next year to set-up, implement and improve our systems to help grow our business.

M: What are your future business plans?

B: Winning this award allowed us to continue investing in our business and take it to the next step. We would like to grow to have 2-3 employees including a designated administration person. During the past five years, whilst building the business and doing the admin ourselves, we have not been able to take family time off easily. More training and better skill sets allows us to attain better work-life balance.



Brendan is a loyal customer of Middy's Coolalinga



Brendan with Middy's Coolalinga Sales Rep, Ashley Crothers

M: Why is Middy's your wholesaler of choice?

B: We prefer Middy's for a few reasons. Middy's pricing is consistent across the board which is something we value highly. You can buy the same thing three times in one week and be charged the same price each time. Middy's holds a full range of stock on the shelves which is an important part in our breakdown service in the Northern Territory as overnight airbags are still 2-3 days to the NT. The after sales support and expertise from Middy's TechEnergy has also come to play a vital role to the everyday electrician.

M: How was the application process, would you recommend others to apply for a Middy's Small Business Award?

B: Very simple, the entire process was done in no more than 1-1½ hours whilst having a couple of beers. I would highly recommend others to apply, it's worth the effort. You won't get a potential \$15,000 return for an hour and half work anywhere else.

So what are you waiting for?

Apply online at: middys.com.au/smallbusinessawards ■

“Let Mercator Ikuü take care of things, so you can focus on what’s important.”

Simply walking into your lounge room seamlessly sets the tone for the evening.

Unwinding is easy, with all your lighting dimming.

Security lighting turns on as the sun goes down ensuring everyone is safe and able to relax for the night.

Keeping an eye out for anyone arriving at your door isn’t a hassle with Mercator Ikuü sending you an alert.

A single tap of a scene switch turns off everything that should be off, so you can get straight into bed at the end of the night.



Australian Designed and Owned



Double IP54 Outdoor Power Point
SPP02GIP-WIFI



10A. Power monitoring.
IP54. Grey finish.
Price Ex GST \$69.00 Inc GST \$75.90
Also available in Zigbee

Outdoor Single Adaptor
SPLUG03



10A. Power monitoring.
White finish.
Price Ex GST \$32.00 Inc GST \$35.20

Video Doorbell
SDC8G



1080p with night mode. Two-way audio.
Stream 24/7. 120 degree viewing angle.
Optional recording via SD card.
12V DC adaptor
Price Ex GST \$150.00 Inc GST \$165.00

‘Walter’ Downlight
SMD4106W-RGB,
SMD4109W-RGB

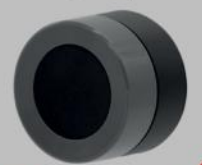


Dimmable, CCT, and RGB. 70mm and 92mm cut-outs. Wattage and lumens vary between models.
6W Wifi: Price Ex GST \$28.00 Inc GST \$30.80
9W Wifi: Price Ex GST \$29.00 Inc GST \$31.90
6W Zigbee: Price Ex GST \$29.00 Inc GST \$31.90

“Coming soon”.

It just got even easier to control your lighting with Mercator Ikuü’s new wireless dimmer.

Control Zigbee lighting products or up to 5 different scenes without needing to get out your phone.



zigbee

NEW PRODUCT

PAR38 Globe
S9E27LEDP38



Dimmable and CCT. 15W 1350 lumens.
Price Ex GST \$27.00 Inc GST \$29.70
Also available in Zigbee

‘Ridley’ Floodlight
SMFL20W



Dimmable. 15W 1650 lumens.
Price Ex GST \$38.00 Inc GST \$41.80
Also available in Zigbee

Contact Sensor
SMA04P



Ideal for doors, cupboards and windows.
Battery based. Historical tracking.
Price Ex GST \$20.80 Inc GST \$22.88

View Our Entire Ikuü Range



Simple to install, quick to set up and easy to use.
To view our entire range, visit

ikuu.com.au



SAHARA 4 IN 1 BATHROOM UNIT

- High performance bathroom unit with integrated fan, fan heater, LED Light and exhaust
- Heat function creates a comfortable and warm environment
- Cooling function is perfect for warmer climates
- High air extraction ideal to control steam and moisture
- Premium 20 watt LED Light panel with high lumen output
- 5 year warranty

Product Code	Price (ex gst)	Price inc gst
SAH31WH	\$420.00	\$462.00
SAH31BL	\$420.00	\$462.00

SAHARA 2 IN 1 BATHROOM UNIT

- High performance bathroom unit with integrated fan, fan heater and exhaust
- Cooling function is perfect for warmer climates
- High air extraction ideal to control steam and moisture
- Fan heat creates a comfortable, healthy environment
- 5 year warranty

Product Code	Price (ex gst)	Price inc gst
SAH21WH	\$360.00	\$396.00
SAH21BL	\$360.00	\$396.00



AIRBUS TOTAL EXHAUST SOLUTION

- Super low profile - ideal for multi-story applications
- Easy to install and clean
- Commercial grade Japanese bearings
- Energy saving backdraft stopper included
- 5 year warranty

Product Code	Price (ex gst)	Price inc gst
PVPXHF200RD	\$90.00	\$99.00
PVPXHF200SQ	\$90.00	\$99.00
PVPXHF250RD	\$120.00	\$132.00
PVPXHF250SQ	\$120.00	\$132.00



MYKA 3 IN 1 BATHROOM UNIT

- Super low profile with flush mount 10w LED downlight
- Side ducted exhaust fan with energy saving backdraft stopper
- Radiant heat globes
- Thermal safety feature
- 3 year warranty



Product Code	Price (ex gst)	Price inc gst
M2HDLXWH	\$130.00	\$143.00
M4HDLXWH	\$150.00	\$165.00

ventair
THE AIR MOVEMENT SPECIALISTS

To find your local Ventair stockist and other products please visit
www.ventair.com.au | [f](#) [i](#) [in](#) [p](#)



"Build your Iconic"

Check out the **new online customisation tool:**

- Select buttons, finishes and accessories
- Get bill of materials to order
- Share configurator with your customers and encourage them to get creative



Go to the **Iconic Builder** tool app

1

Base Range



Clipsal Iconic

Carry one base range in your van, offering limitless customisation and smart home readiness to grow your business.

3

Skin Designs



Standard



Styl



Essence

10

Finishes



[Clipsal.com/iconic](https://clipsal.com/iconic)

© 2021 Schneider Electric. Life Is On | Clipsal is a trademark and the property of Schneider Electric SE, its subsidiaries and affiliated companies. All other trademarks are the property of their respective owners. 998-21202508_AU-GB

Life Is On

Schneider
Electric

Middy's Info Nights Visiting Near You



Middy's 2022 Info Nights kicked off in Launceston on 23 March to a hugely receptive audience and was a resounding success. We're getting ready to hit Victoria next before heading up to NSW and WA before finishing in Mildura later in the year.

The Middy's Info Nights are a great night of information and entertainment, with keynote speakers from within the electrical industry speaking about what matters most to contractors.

Come along and meet your industry peers and mix in the relaxed and informal environment of a fun night.

The night commences with a supplier trade show and latest technologies display, followed by an introduction from the Middy's family.

Prizes are awarded for Product of the Night as well as door prizes, showbags and giveaways. Refreshments and a two course dinner are also provided.

The nights are FREE to all members of the industry, contractors, partners, wives and apprentices.

Info Night Features:

- ❑ Supplier Trade Show
- ❑ Comedian MC
- ❑ Welcome by Middendorp Family
- ❑ Regulations & Safety Update
- ❑ EV Updates
- ❑ Product of the Night
- ❑ Dinner & Drinks
- ❑ Prizes & Showbags

This year we have a blockbuster schedule of 15 Info Nights around Australia, so it's easier than ever to come along and join in for a great night. Don't miss out. Register for a Middy's Info Night at: middys.com.au/info-nights ■

2022 Info Night Schedule:

- | | |
|----------------|----------------------------|
| ❑ 23 March | Launceston, TAS |
| ❑ 6 April | Melbourne Outer East, VIC |
| ❑ 27 April | Greater Geelong, VIC |
| ❑ 4 May | Bendigo, VIC |
| ❑ 1 June | Griffith, NSW |
| ❑ 29 June | Sydney, NSW |
| ❑ 13 July | Melbourne North West, VIC |
| ❑ 27 July | Merimbula, NSW |
| ❑ 17 August | Melbourne South, VIC |
| ❑ 31 August | Leongatha & Wonthaggi, VIC |
| ❑ 7 September | Melbourne North East, VIC |
| ❑ 14 September | Goulburn, NSW |
| ❑ 12 October | Wagga Wagga, NSW |
| ❑ 9 November | Western Australia |
| ❑ 16 November | Mildura, VIC |



Middy's Leading The Way With EV Charging Technology

Middy's Electrical is leading the way in new technology and energy efficient products. Our aim is to ensure customers have access to quality products and the right solutions. This has resulted in Middy's partnering with market leading suppliers in Electrical Vehicle charging technology.

Here at Middy's we have trained specialists throughout our branches who can assist you with your current and future needs on all things e-mobility. Our team is ready to assist your business to help understand all factors when deciding on the right EV charging solution for you.

Considerations for commercial and residential installations include:

- ❑ Current EV market technology and standards
- ❑ User profiles and their unique requirements: personal use, public use or fleets
- ❑ Installation advice and integration within existing site infrastructure
- ❑ Day to day operational consideration such as billing capability, asset management, repairs, and maintenance.



The team at your local Middy's branch is looking forward to scheduling a time to talk further with you on this exciting and evolving space and showcasing how Middy's can assist you and your business in your e-mobility transition. ■

Been Asked To Quote EV Charging?

Get powered with Wallbox EV Chargers.

Offer your customers the perfect electrical vehicle (EV) charging solution, with the Wallbox AC range of EV chargers. Made in Spain, these smart charging systems combine easy installation, cutting-edge technology and outstanding design to manage the communication between car and charger via easy-to-use apps.

The Wallbox EV Chargers are:



Intelligent

Schedule and monitor charging sessions



Simple

User-friendly size and design



Fast

Reduce charging time by more than half



Connected

Control from anywhere via the app

Powered by the myWallbox platform

The myWallbox platform offers a range of functions and allows your customers to choose a subscription plan that best suits their needs.



Meet our range of Smart EV Chargers:

Pulsar Plus

Small is powerful



Commander 2

Shared charging made easy



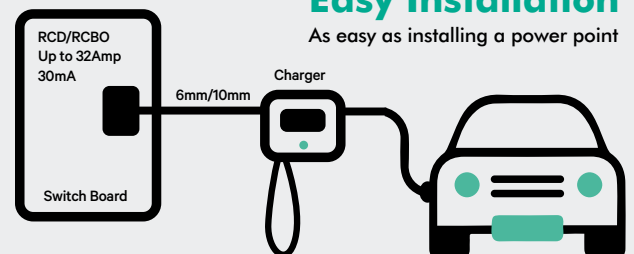
Copper SB

Versatility is beautiful



Easy Installation

As easy as installing a power point



Middy's is an exclusive wholesale partner of the Wallbox EV Chargers. Visit your local branch for same day expert advice for you and your customers. Talk to our staff about the range today. Available at 30 branches across our national branch network. ■

wallbox 

-  Charge your car conveniently
-  Compatible with your electric vehicle
-  Solar capable
-  Up to 8x faster than a standard charger
-  Save money with smart scheduling

Discover our range of EV chargers:



Unlocking the power of EV charging.

Now available at **MIDDY'S**



supplied by

JETCHARGE

TRADER

zimi



Learn how we made it Smarter.

powermesh
Master Class

www.zimi.life/masterclass

Are you confused by all the smart products? Do we really need them, is installation too hard and what will a customer even use them for?

Join Master Class today to gain the knowledge and understanding of how the humble electrical switch is evolving and how you can benefit from this incredible transformation of our industry.

Get started
with free access
for readers of the
Middy's Mag.



Scan and use this
invitation code.

MIDDYSMAG

Staff Spotlight



Justin Campbell

Branch Manager Griffith, NSW

Justin has been working at Powerplus for the past 6 years as Branch Manager in Griffith, NSW. We caught up with Justin to discuss all things work, life and what he gets up to in his spare time...

What is the most rewarding part about your job?

The most rewarding part of my job is being able to assist all customers with their projects and seeing the completed results come to life.

What motivates you most about your job?

My biggest motivator is learning about new and emerging technologies that in turn can assist in my self-improvement.

What are your goals inside and outside of work?

There is no doubt that my goal is to have a more relaxed work/home lifestyle balance.

What are your hobbies?

I have a few hobbies that keep me busy such as going to the gym and bike riding. However, I am a big motor sport fan so anything to do with cars I enjoy turning my hand to.

What would you say has been your greatest highlight in life?

My greatest highlight to date was getting married and having two healthy happy children as well as building a new family home.

Sparky Spotlight



Brandon Catchpole

Essential Cabling, WA

Brandon is a loyal customer of Middy's Bibra Lake in WA. He is the Director of Essential Cabling. We stop to chat and find out what he's all about...

What type of work does your business specialise in?

We specialise in commercial, residential and maintenance. We do everything from warehouses and sub-divisions to new builds and maintenance.

What do you think is the most rewarding part about working as an electrician?

Definitely the job security and the opportunity to work in many different fields and areas.

What is the biggest threat you're currently facing in the Electrical Industry?

The biggest threat I am currently facing is an increase of material costs due to COVID as well as freight and copper issues.

What type of industry training do you recommend and believe is important for future electricians?

I believe it is important to have training in Solar and Battery Storage as well as Electric Vehicle Charging. This will be incredibly beneficial for future electricians.

What are your hobbies and interests outside of work?

I love sport, all things golf, footy (go the Bombers) as well as wine.

Want to feature in our Sparky Spotlight? Drop us a line and we'll get in touch. Email us at hello@middys.com.au

The Middy's TechEnergy Team Are Here To Help

TECHENERGY UPDATE



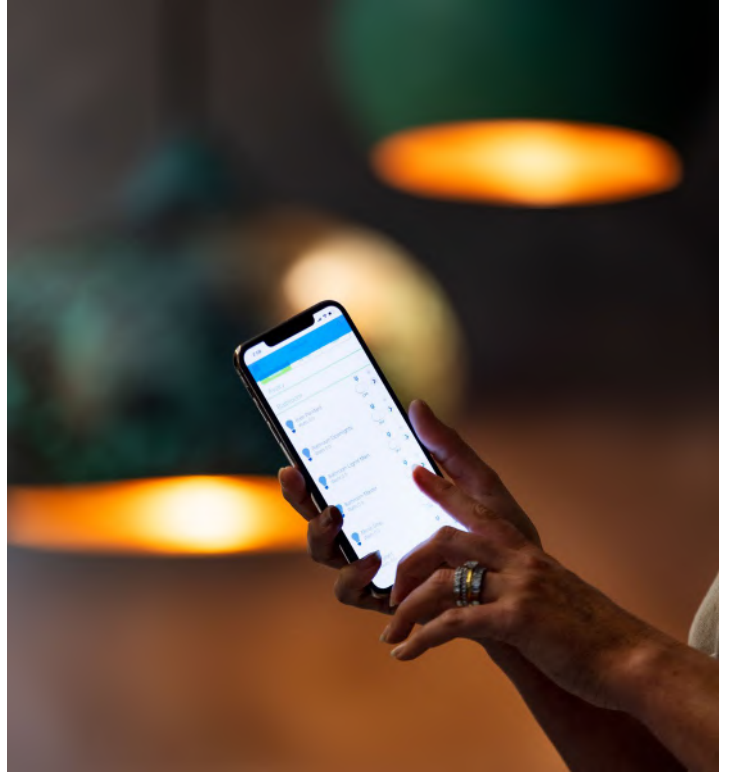
Middy's is here as your partner, to help you and your clients navigate through this rapidly emerging world of smart electrical.

Our dedicated and knowledgeable TechEnergy team is here to assist with pre and post activities to ensure your technology solution deployment is as smooth and seamless as possible.

With 100+ years experience in the electrical industry we understand you, the electrical contractor and how valuable your time is when on-site installing. Our role (Middy's) is to be your sales arm and we have a plethora of services at hand ready for you to tap into and capitalise on with all opportunities that come your way.

Our Services include:

- ❑ **Smart Centre** – this state-of-the-art facility is fully operational with all the latest and greatest technology and is manned by expert staff ready to service you and your clients
- ❑ **Smartspec** – let our consultant sit with your clients and plot their smart electrical wish list onto their plans with Middy's exclusive electrical design software
- ❑ **Solar Designs** – using all the latest software programs, Middy's can design all your on or off-grid projects
- ❑ **Lighting Designs** – don't lock yourself into one brand, tap into Middy's agnostic lighting design service for your next project
- ❑ **Integration Service** – we believe your role as an electrical contractor is to carry the tools and install products for your clients, that's why we are here to make sure all your smart electrical



projects run smoothly and are designed and programmed to exceed your clients' expectations. Our team of highly knowledgeable Integrators will help you achieve this. Proficient with a myriad of wired and wireless automation systems and able to program and/or integrate multiple technologies such as CCTV, security, access control, intercom and more, this service is a must if you want to capitalise on the smart electric economy boom.

For more information contact your local branch or representative. Alternatively you can call **1800 778 823** or email **techenergy@middys.com.au** ■



 **MIDDY'S**
TechEnergy

Grow Your Business With Help From Middy's Smart Centres



Come in and visit our Middy's Smart Centres, they feature fully interactive displays showcasing the latest products and technologies in a hands on, touch and feel showroom. We also offer a virtual experience for customers interstate and in country areas.

Helen Papanotas, Manager at the Middy's Smart Centre in Clayton, endeavours to ensure an enjoyable experience for every person who walks through the door. Testimonials from customers like Puresh from VMR Electrics are testament to this.



I contacted Middy's Dandenong Branch Manager Adam Triandafillou and asked to have a look at the latest automation products for a project I was working on. He sent me to the Middy's Smart Centre where they were able to find a solution through a KNX Automation system. I couldn't be happier.

- Puresh, VMR Electrics

In addition to the Middy's Smart Centres in Clayton VIC and Padstow NSW, select Middy's branches feature in branch working interactive displays with staff on hand to answer all your queries. Our friendly staff will guide you through our Smart Displays and demonstrate new products in home automation, security, CCTV, Access control, smart technologies, audio visual and home theatre.

Smart Displays Showroom Locations:

VIC:

- ☐ Ballarat West (Delacombe)
- ☐ Benalla
- ☐ Bendigo (Golden Square)
- ☐ Bendigo North (Epsom)
- ☐ Colac
- ☐ Echuca
- ☐ Geelong
- ☐ Grovedale
- ☐ Hallam
- ☐ Horsham
- ☐ Lilydale
- ☐ Moorabbin
- ☐ Oakleigh
- ☐ South Morang

NSW:

- ☐ Wagga Wagga

ACT:

- ☐ Fyshwick

QLD:

- ☐ Nerang

NT:

- ☐ Coolalinga
- ☐ Darwin (Woolner)
- ☐ Palmerston

TAS:

- ☐ Hobart Eastern Shore (Mornington)

WA:

- ☐ Embleton

We're proud to say, our VIC Smart Centre was recognised as a state finalist in the NECA Excellence Awards for 2020/2021. We invite you to come on in and see why.

Offer your customers more and exceed their expectations with Middy's SmartSpec. Kari Leigh, our SmartSpec consultant, will take you through everything electrical to enhance your client's lifestyle. You will be provided with documentation that includes a bill of materials, product images and specifications.

Book an interactive Smart Centre tour today on **1800 778 823** or online at **middystechenergy.com.au** ■

MIDDY'S TechEnergy | **MIDDY'S SMARTCENTRE**

Best In Class Training For Electrical Contractors And Professionals

Enhance your skills and knowledge, grow your career and develop new income streams in emerging markets with Middy's Training courses.

Training courses offered by Middy's include in-house training at our refurbished Smart Centre facility as well as supplier based accredited training sessions conducted nationally. Middy's training is designed to support registered electrical contractors and trade professionals grow their businesses with new income streams.

Training courses are offered in the following categories:

- | | |
|-------------------------------------------------------|---------------------------------------------------|
| <input type="checkbox"/> Lifestyle Control/Automation | <input type="checkbox"/> EV Charging |
| <input type="checkbox"/> Audio Visual | <input type="checkbox"/> Security |
| <input type="checkbox"/> CCTV | <input type="checkbox"/> Air Conditioning |
| <input type="checkbox"/> Data Comms | <input type="checkbox"/> Quoting & Planning Tools |
| <input type="checkbox"/> MATV | <input type="checkbox"/> Work Safety |
| <input type="checkbox"/> Solar & Battery Storage | <input type="checkbox"/> Energy Efficiency |

Registering for a training course is as easy as 1,2,3...

Step 1. Visit middystechenergy.com.au/training

Step 2. Choose a course from the categories available

Step 3. Register online

For more information call **1800 778 823**
or email training@middys.com.au ■



MIDDY'S
TechEnergy

Now available
at Middy's



energizerhomepower.com

Energizer
HOMEPower

Discover easy

SONOS

Mix and match Sonos speakers around the home for multi-room listening, stereo sound and immersive home theatre. With effortless setup and installation, the wall-mountable Sonos One is the powerful smart speaker with built-in voice control and beautiful sound right out of the box.



Control with your voice.

Use the Google Assistant or Amazon Alexa to play and manage music completely hands free.



Set up over Wi-Fi.

Plug in. Connect. Stream without interruptions or interference.



Start in any room. Add on.

Play different songs in different rooms. Or the same song everywhere.



Control with one app.

Pick a room. Pick a song. Hit play.



THE LOCATION:
MOYNE HEALTH SERVICES PORT FAIRY, VICTORIA



THE INSTALL:
800 AMP SWITCHBOARD UPGRADE & 440KVA
GENERATOR INSTALL

Moyne Health Services

PORT FAIRY HOSPITAL SWITCHBOARD UPGRADE

Port Fairy Hospital has been serving the local community since 1852. During this time there have been many additions and alterations to buildings and supporting infrastructure which have required immediate attention. Along with the recent Royal Commission recommendations, Project Manager for Moyne Health, Peter O'Keeffe was tasked with implementing the required upgrades.

To accommodate this need, an upgrade to the main switchboard was required doubling its capacity to 800 amps. As the hospital is in a fire prone area there was also a requirement for the facility to survive power outages at 100% capacity. To achieve this, a new 440kva generator was needed, along with an automatic transfer switch located in the new main board. Another point of concern was that the power around the buildings was mostly supplied in a daisy chain topology which in fault conditions presented greater loss of power. To counter this, the 20 new NHP distribution boards will be fed directly from the supplied 5.2metre double sided main board.

Peter turned to Hank Terpstra, Middy's Industrial Business Development Manager and the team at the Warrnambool branch to deliver.

Another way Middy's offers you more...

THE INSTALL:

800 AMP SWITCHBOARD UPGRADE
+ 440KVA GENERATOR
20 X NHP DISTRIBUTION BOARDS

“

Hank's industry knowledge, experience, service, support and his great relationship with the Middy's Warrnambool team has made all the difference.

Peter O'Keeffe - Project Manager, Moyne Health

”

Download this Case Study at: middys.com.au/case-studies

Middy's Industrial Offer End To End Solutions To Meet All Your Needs



Middy's Industrial is a revitalisation of the company's Industrial program focusing on our electrical contractors and market verticals such as end-user food and beverage, mining and water.

This is not to say we have not been engaged in this market; we have, with all Middy's branches selling industrial product. We have taken a more strategic approach on Industrial, and initiatives are already in place.

Firstly, we have commenced building a team of industrial specialists led by Trevor Quaini (National Industrial Manager) with over 40 years experience. Trevor is an electrician by trade and has held industrial roles with Clipsal then Schneider Electric.

Troy Crawford (Northern Victoria and Southern NSW BDM) with over 30 years experience as an industrial electrician at end-user locations as well as 21 years with Remtron Automation Albury.

Hank Terpstra (Western Victoria BDM) has over 30 years experience as both an industrial electrician at the Ford Motor company as well as various roles at Hager, B&R, Eaton and Schneider.

Dean Sullivan (Eastern Victoria) also has over 30 years experience as an industrial electrician at end-user sites as well as 25 years with NHP.

Glen Gunson (Northern Territory BDM Industrial) has 17 years experience within the electrical wholesale industry primarily servicing the Mining sector including period contracts and projects and Industrial Contractors.

As you can see, combined we have well over 100 years of industrial knowledge and market experience within our Industrial team. We will continue to build on our specialist team, and we

want to understand your business and provide: added value, solutions and support. Our ambition is to be the trusted partner for all your industrial needs. Reach out to any of our friendly Middy's staff with an enquiry, we look forward to the opportunity to work with you.

Our people are our most important asset and as such, up-skilling our branch staff through dedicated training programs has already commenced. We are being well supported by all lead industrial brands training teams on all current and emerging industrial technologies so we can offer our customers more. We can also provide specialised training on request.

Significant investment has already been made to increase industrial stock levels, mainly with the industrial branches. We want our customers to be confident when they walk into one of our industrial branches that they will walk out with product in hand.

To kick off the Industrial program it was decided to strategically focus on 21 branches primarily in Victoria. This is designed to best service their nearest region and local Middy's branches. Eventually all Middy's branches will be brought into the program. The current list of Middy's Industrial Branches can be found in all editions of the Middy's MAG and on the Industrial page of the Middy's website.

You will see increased marketing activity on our website, in the Middy's MAG, on posters, branch signage and at our Info Night events. To make the selection of industrial products easier for you, planograms have been set-up behind the branch counter in all industrial branches. Look out for industrial promotions coming your way soon.

Our vision is simple. That is for Middy's Industrial to be the industrial wholesaler of choice. We want to ensure the customer experience is a positive one by providing end to end solutions that meets the end user, electrical contractors, and their clients' needs.

Please speak with our friendly Middy's staff regarding your industrial enquiries and needs.

These can include:

- ❑ On site meetings
- ❑ Customised training
- ❑ Off the shelf panel boards, custom built panel boards, low voltage switchboards, tenancy boards, group metering and motor control centres
- ❑ Off the shelf and custom-built starters
- ❑ Commissioning, serving, breakdown, repairs and refurbishment of variable speed drives
- ❑ Custom built motors and gearboxes for all end user mining, food & beverage and water applications, etc.

Industrial Specialists Contact details:

Trevor Quaini – National Industrial Manager
M 0435 195 473 | E trevor.quaini@middys.com.au

Hank Terpstra – Western Victoria
M 0429 843 242 | E hank.terpstra@middys.com.au

Troy Crawford – Northern Victoria, Southern NSW
M 0436 836 621 | E tcrawford@middys.com.au

Dean Sullivan – Eastern Victoria
M 0429 888 580 | E tcrawford@middys.com.au

Glen Gunson- Northern Territory
M 0409 766 071 | E glen.gunson@middys.com.au

Contact one of our Industrial Specialists or your local Industrial Stockist branch to see how we can help you. ■

Supplier partnerships are key to assist our growth ambitions. These include:



Visit one of our Middy's Industrial Branches:

VIC:

- ❑ Ballarat
- ❑ Bendigo North
- ❑ Carrum Downs
- ❑ Dandenong South
- ❑ Geelong
- ❑ Hallam
- ❑ Laverton
- ❑ Mekolec Port Melbourne
- ❑ Shepparton
- ❑ Warrnambool
- ❑ Yarraville
- ❑ Ballarat West
- ❑ Braeside
- ❑ Dandenong
- ❑ Echuca
- ❑ Geelong North
- ❑ Hastings
- ❑ Leongatha
- ❑ Oakleigh
- ❑ Traralgon
- ❑ Wodonga

NSW:

- ❑ Wagga Wagga

NT:

- ❑ Palmerston

SA:

- ❑ Salisbury North
- ❑ Mildura

Industrial product Middy's supply include:

- ❑ Contractors
- ❑ Soft starters
- ❑ Metering
- ❑ Transfer switches
- ❑ Distribution boards
- ❑ Air circuit breakers
- ❑ Sensors
- ❑ Current transformers
- ❑ Photo electric
- ❑ Weatherproof
- ❑ Hazardous location
- ❑ Overloads
- ❑ Motors
- ❑ Enclosures
- ❑ Load break switches
- ❑ Relays
- ❑ Terminals
- ❑ Power factor correction
- ❑ Motor protection and circuit breakers
- ❑ Variable speed drives
- ❑ Fuse switches
- ❑ Industrial circuit protection
- ❑ Pendants and signalling
- ❑ Pressure switches
- ❑ Push buttons
- ❑ Limit switches
- ❑ Proximity switches
- ❑ Cam switches
- ❑ Measurement, control & monitoring
- ❑ DOLs
- ❑ Star Delta motor starters
- ❑ Power Supplies & Transformers
- ❑ Moulded case breakers
- ❑ Times
- ❑ Cable & glands

Data Cabinets and Accessories

Protect your valuable IT equipment and data in the Dueltek purpose built data cabinets. Available in multiple capacities and heights to suit your needs and space.



A+B

Complete System

Free standing floor racks and wall-mount cabinets come in modular unit sizes, designs and colour for a co-hesive look.



Protection

- Strong sturdy construction.
- Lockable front, side and rear doors
- Cooling 2 or 4 way fan tray.



Visibility

See-through glass front door allows for easy inspection without opening the unit.



< All our **Floor Racks** include castors, levelling feet, repositionable shelves and a 7-port 3-Pin AUS/NZ PDU.

^

Wall Cabinets come in a range of modular sizes and include PDU mounting points at front and rear.

Rear Swing Gate Models also available for easier access when installing and servicing.



Flexibility

PDU's available with 7, 10 or 15 ports for 3-Pin AUS/NZ or IEC-C13 Sockets.

DATA ENCLOSURES & CABINETS

Distributed by

 **OMEGA**
The Power To Perform

www.omegapower.com.au





Supplying Australia's electrical wholesale industry since 1982.

It's with great pleasure that we announce OMEGA Power Equipment has surpassed yet another milestone, celebrating it's 40th anniversary this year in April.

OMEGA Power Equipment commenced in 1982 when an entrepreneur saw a gap in the market for an Australian owned distribution agent to the electrical wholesale market. OMEGA Power Equipment provides product and assistance to electrical wholesalers and acts as a manufacturer's agent. In 1986 following the acquisition of AVH, OMEGA relocated to a larger facility in Moorabbin.

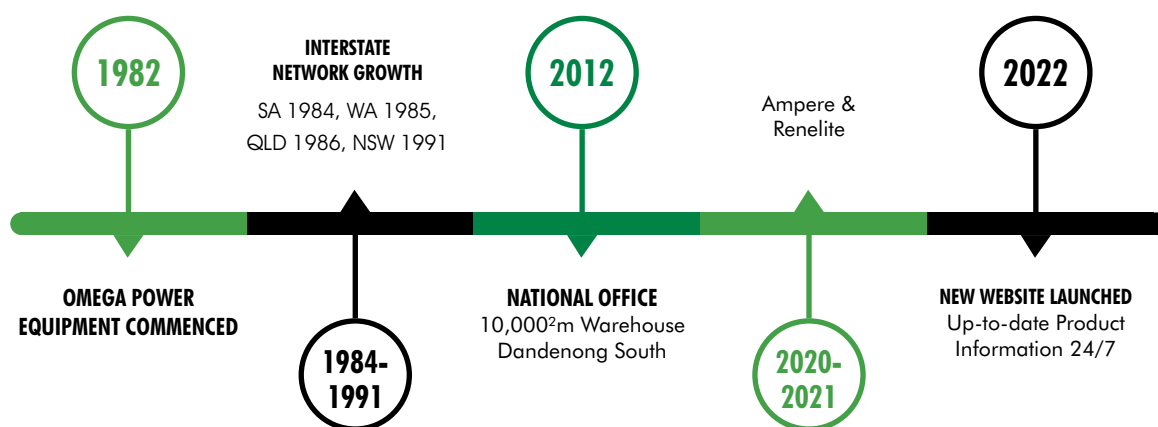
OMEGA continued to grow with branches opening in SA in 1984, WA in 1985, QLD in 1986 and NSW in 1991.

In 2012 OMEGA relocated to its current 10,000²m National Office and warehouse in Dandenong South.

General Manager David Rea says, "We take pride in sourcing high quality products and brands that are sourced both locally and overseas. OMEGA's growth will be through new products and improved service, as we have continued to invest into the business over the last few years with the implementation of a new ERP and warehouse management system."

April sees OMEGA launch its new website giving customers easy access to product information and technical data 24/7 with over 2500 high quality, electrical products from over 30 market-leading manufacturers and brands. Visit: omegapower.com.au

OMEGA TIMELINE



omegapower.com.au 1800 633 620

Middy's Community Snapshot

Across Middy's 100+ nationwide branch network we are interacting with and supporting our customers and local communities...



Good Morning from Middy's Oakleigh.



Congrats to one of our NT Thorneco promo winners who won a Saber 3500W Petrol Generator.



Little Noah may need the next size down.



Drop into your local branch and pick up some merch. Even the animals love it.



How cool. Middy's Northmead BM, Ramon Ortiz has built his very own Middy's RC Car.



We recently gave away 104 Oklahoma Joe's Highland Offset Smokers in our Legrand Smokin' Hot promo.



Doesn't get much better than this. An avid Middy's Racing fans meets his idol Bryce.



Getting it done at the gym in their Middy's Tees.



Recognising all the women building a career in the electrical industry on International Women's Day.

Have some interesting Middy's related news? Email us your pics: hello@middys.com.au

Also don't forget to connect with us on our socials...



Middy's Electrical



middyselectrical



Middy's Electrical

DIN-T 3P+N RCBO



Easy upgrade from 3P MCB to RCBO

- AS/NZS 61009 
- Compact 3P 54mm width
- 10kA Type A
- 6A – 63A, C Curve
- 30mA, 100mA, 300mA
- Suits Concept Panelboards

To find out how easy it is to upgrade from 3P MCB to RCBO, call your local NHP Account Representative or go to nhp.com.au/mcbrcd



NHP Electrical Engineering Products



AUS 1300 NHP NHP NZ 0800 NHP NHP

nhp.com.au
nhpnz.co.nz

**Fergus free
for 14 days?**

+

+

**Scan to start
your free
14 day trial.**

Or go to fergus.com/signup
and use promo code: **FERG22**



**You
fucking
beauty!**



Fergus

Job software tradies swear by

Digital Time Switches

Time to

switch



Our new generation of digital time switches has all the same capabilities of our current range with the added benefit of easier programming and more flexibility through the Bluetooth option. You just have to pre-program your schedule on a mobile device and transfer via Bluetooth... job done!

hagerelectro.com.au



Download the free Hager Mood App

Available on the
App Store

GET IT ON
Google Play

Get it from
Microsoft

:hager

FEEL AT HOME AUTOMATION & CONTROLS



LENA VARIO Circular Bulkhead

Attentive and adaptable, Lena Vario lights up corridors whenever needed

- This model comes as a 1800lm – 18w (100lm/W). Other wattage models also available
- Direct replacement for 2 × 26 W CFL lamps
- Save up to 55% energy compared with CFL fittings
- Quality PMMA diffuser for an even light distribution
- Dimmable LED



Code	Description	SPECIAL PRICE +GST
96649603	LENA VAR 1800 380 DIM 830/40/57	\$68.00 +GST

THORN

LEONIE PLUG & PLAY

Microwave Sensor accessory for Leonie LED Flood Light

Small yet extremely powerful, Leonie lights up dark outdoor areas

- To be used as an accessory with the "LEONIE LED" Floodlight
- Pre-wired with mains cable
- Very lightweight, compact and streamline design
- Motion detection range & time duration are fully adjustable.



Code	Description	SPECIAL PRICE +GST
96630339	LEONIE PLUG&PLAY MWS	\$17.00+GST

JULIE VARIO

Linear LED Outdoor Luminaire with Microwave Sensor

With a tough exterior, Julie is the optimal for rugged settings

- This model comes as 2173lm - 19w (100lm/W) or 4561lm - 38w (100lm/W)
- Sealed to IP65 for protected exterior application
- Save up to 60% energy compared to T8 fluorescent
- High quality opal diff user for uniform lighting



Code	Description	SPECIAL PRICE +GST
96649391	JULIE VAR LED 600 2200 830/40/57 MWSCOR	\$56.00 +GST
96649392	JULIE VAR LED 1200 4200 830/40/57 MWSCOR	\$80.00 +GST

www.thorn-eco.com

+61 1300 139 965 | info.au@zumtobelgroup.com

It's All About Family



Bryce with the newly designed livery

Middy's continues to support Bryce Fullwood as he joins Brad Jones Racing (BJR) for 2022.

We are pleased to announce the continued support of Bryce Fullwood as we partner with Brad Jones Racing for the 2022 Repco Supercars Championship Season as the team's Naming Rights Partner.

Middy's have joined the BJR family for 2022 on the Fullwood entry No. 14 Middy's Supercar Holden ZB Commodore and are excited at the opportunity this brings.

BJR is built around similar values to Middy's being a family-owned and run operation that embodies the Aussie spirit of mate-ship and hard work.

Our commitment to Bryce Fullwood began back in his early go-kart days and has continued throughout his fantastic career. The now 23 year old Territorian made his Supercars debut in 2018 and has since been in over 55 championship races, including a podium finish at Tailem Bend in 2020 and four top-ten finishes.

Bryce piloted the newly designed Middy's BJR livery for the first race of the 2022 Supercars Championship at Sydney SuperSprint on 4-6 March. There were plenty of highs and lows for the first weekend of the championship, with the team finishing P19.

The new livery features "Don't Risk It - Use a Licensed Electrician" on the bonnet, as we look to remind the community to play it safe using a licensed electrician and their trusted brands.

II

I'm stoked to be able to race with Brad and the team at BJR. From the moment I walked through the doors I felt at home, you can tell it's a family here. It's also fantastic to continue my relationship with Middy's who has been a big supporter since my go-kart days, this will be their 10th year.

- Bryce Fullwood

II

Bryce has fitted in with the team really well and we're thrilled to be welcoming Middy's to BJR this year. They're a family business with a huge passion for motorsport - much like all of us here at BJR.

- Brad Jones (Team Owner)



Look out for Bryce as he travels the country for the 2022 Repco Australia Supercars Championship. He'll be visiting select Middy's branches for exclusive meet and greets with food trucks on-site and prizes to be won. Be part of pre-race Q&As with Bryce and possibly score free hand signed racing posters, caps and polo shirts. Look out for the Middy's Racing Show Car on display too. Watch this space... 2022 dates and locations to be announced soon.

Middy's Racing Merch has an exciting new look for the 2022 Repco Supercars Championship Season and will be available for purchasing soon, so stay tuned...

Keep up to date with Middy's Racing and view the Supercars Schedule at: middys.com.au/middys-racing-supercar ■



On behalf of Co Director my cousin, Anton Middendorp and the entire Middy's team we are excited to continue our support of Bryce Fullwood partnering with Brad Jones Racing as Team's Naming Rights Sponsor for the 2022 Supercars Championship.

- Nicholas Middendorp (Middy's Director)



Quality cable, connectivity and associated technology.

Indoor and outdoor cable, patch cords, pigtails, through adapters, FOBOTs and cleaning solutions



48 Fibre Sliding FOBOT

24 port, 48 fibre 1RU sliding FOBOT (Fibre Optic Break Out Tray). The MT30903A is the latest evolution of its successful fibre optic range of products. It replaces the older MT30903, and features the following upgrades:

- Capacity doubled to 48 fibres
- Improved metalwork
- Extra heavy duty roller slides
- Redesigned drawer locks
- Upgraded faceplate clips
- Adjustable mounting flanges
- Blanking plugs for unused ports

24/48 Sliding FOBOT - MT30903A **\$240^{+GST}**

Rack Mount 24 Port Fixed Drawer Fibre Panel FOBOT

24 Port, 19" 1RU fixed lid rack mount FOBOT (Fibre Optic Breakout Terminal) for installations where pigtail splicing, pre-termination or field termination is required. The modular adaptor panels allow a choice between ST/FC, SC/DLC, DSC/QLC & blanks, with a full set of each included in each panel. Includes:

- Cable Glands
- Internal Cable Management
- Fibre Tubing
- Splice Protectors
- All mounting screws and nuts

24/48 Fixed FOBOT - MT30904A **\$140^{+GST}**



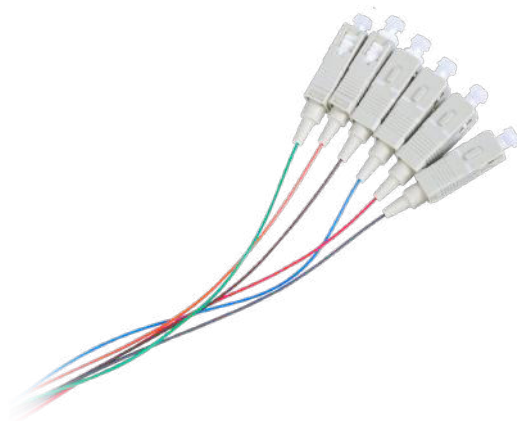
GPT Series Pigtails

The new Garland GPT series of optical fibre pigtails is designed to complement Garland's existing fibre optic portfolio. These pigtails are designed for fusion splicing onto existing cable, prior to final termination.

Pigtail LC OM3 2m Rainbow 6 Pack* - GPTSLCOM3-2-6PK **\$48^{+GST}**
Pigtail LC OM4 2m Rainbow 6 Pack* - GPTSLCOM4-2-6PK **\$60^{+GST}**

* Also available in a 12 pack.

Ask about our other connector configurations and our full range of fibre accessories.



It's time for **SMART LIVING**

FIBARO

Start your smart home adventure



Easy to install and program



Retro fit or new build installs made easy, no proprietary cabling



Control lighting and blinds with FIBARO's Z-Wave technology



Wide range of sensors and switches to control lighting or smart security



Download the
Yubii app today

The core of your smart home



 **MIDDY'S**

Contact your local branch

Call 1800 778 823 or visit www.middys.com.au



Middy's PowerPlus Griffith Branch

Visit Our Newest Branches In NSW

Middy's is pleased to announce the acquisition of PowerPlus and sees us welcome two new branches to the Middy's Family.

PowerPlus Griffith first opened in April 2004 at 120 Yambil St, Griffith. PowerPlus Leeton then followed in March 2009 at 38 Acacia Ave, Leeton. Both branches were opened by, owned and operated by Adam Truscott and Anthony Martinello. In 2007 they joined the Gemcell Group and remain proud members putting them on a level playing field with national competitors.

In 2021 both branches were acquired by Middy's Electrical. PowerPlus is a valuable addition to our NSW/ACT market presence which now extends to sixteen branches.

Like Middy's, the PowerPlus business is based on local needs and the desire to offer the best personal service possible. Always striving to keep up with technology, remain well informed, keep quality products on the shelf, support Australian made where possible and most importantly, refuse to buy and sell products that don't meet Australian Standards.

The teams at our Middy's PowerPlus branches are always ready to help with both retail and trade customers, whether you need a single battery or a whole house wired. With our teams vast knowledge in products, we are sure to help.

Middy's customers can use their accounts at PowerPlus branches, likewise PowerPlus customers are welcome at Middy's.

In the near future both PowerPlus branches will undergo re-branding of both internal and external signage, making it easily identifiable by its trademark colour of Middy's pink.

Griffith branch features:

- ❑ Excellent off-street parking facilities
- ❑ Easily accessible and centrally located
- ❑ Large open showroom with a broad range of stock
- ❑ Extensive range of Air Movement & Lighting products

Leeton branch features:

- ❑ Excellent off-street parking facilities
- ❑ Easily accessible and centrally located
- ❑ Open showroom with a broad range of stock
- ❑ Extensive range of Lighting & Air Movement products

Griffith Branch Manager Justin Campbell and Leeton Branch Manager Tara Hogan and their teams look forward to welcoming you. ■

 **PowerPlus GRIFFITH**
Lighting & Electrical Suppliers

120 Yambil St, Griffith, NSW 2680
P (02) 6964 8011 | E griffith.nsw@middys.com.au
Mon-Fri 7am-5pm | Sat 7am-12pm

 **PowerPlus LEETON**
Lighting & Electrical Suppliers

38 Acacia Ave, Leeton, NSW 2705
P (02) 6953 8011 | E leeton.nsw@middys.com.au
Mon-Fri 7am-5pm | Sat 8am-11am



Meet The Middy's PowerPlus Teams



GRIFFITH TEAM: Front Row (L-R): Matt, Vince, Danielle, Justin & Grant
Back Row (L-R): Luke, Anthony, Mark & Corey

Justin Campbell - Griffith Branch Manager

Justin has been at PowerPlus Griffith longer than anyone else at the branch, coming on 12 years. Justin has always had an interest in the Electrical Industry which is what motivated him to start at PowerPlus. Justin enjoys motor sport and has been an avid supporter of the West Tigers in the NRL since he was a young kid.

Mark Patten - 2IC

Having worked in the Electrical wholesale industry for over 25 years, Mark's highlights from his 5 years at PowerPlus have been the positive relationships he has built with his customers. His business goals are simple, to achieve high sales and profitability. Outside of work Mark is a big NRL fan following the Bulldogs for over 40 years. Mark's greatest accomplishment to date is being father to boys Hayden and Mitchell.

Corey Ceccato - Counter Sales

Having had previous experience in the industry, Corey joined the team at PowerPlus 5 years ago. Prior to entering the electrical industry, Corey worked as a locksmith and panel beater. Outside of work Corey has an interest in cars and all things outdoors.

Luke Pearse - Counter Sales

Motivated to work in a job full of culture and to interact with people, Luke came to work at PowerPlus about a year ago. His business goals are to keep learning and getting better at his role. Outside of work he enjoys camping and gaming and was even Sussex Inlet Junior fishing champion in 2006.

Anthony Smith - Driver

Anthony has been a part of the team for 18 months and has enjoyed making new friends in the electrical field as well as continuing to learn about everything electrical and lighting. Outside of work Anthony is a Collingwood supporter and his greatest accomplishment to date is being a father to his wonderful kids.

Katie Hume - Admin

Katie has been at PowerPlus for 11 years and has always loved working for a family friendly business. Her background is extensive having experience in fashion, teaching as well as welfare. Outside of work she enjoys horse riding and sewing.

Danielle Smith - Admin

Danielle has been at PowerPlus for 9½ years. Her life outside of work is incredibly interesting as she is a reiki practitioner and part time interior design consultant for a local building company. Danielle says her greatest accomplishment to date is being able to say she has designed multiple homes in her local region.

Vince Logiudice - Counter Sales

Vince has been at PowerPlus for 11 years and has always enjoyed the friendly environment from the moment he started. Having previous experience as an electrical wholesaler since 1983, Vince brings all that knowledge to PowerPlus. Outside of work Vince is a Rugby League fan and enjoys playing golf.

Matthew James "Doc" - Store Person

Matthew has been at PowerPlus for 5½ years and has enjoyed the relationships he has built with customers. Matthew is a massive NRL Panthers fan and his greatest accomplishment to date is being a father of three kids.

Grant Barber - Inventory Officer

Grant has been at PowerPlus for 17 months, his goal being to work effectively with the team. His coolest experience to date was sky diving from 18,000 feet and being a proud homeowner.



120 Yambil St, Griffith, NSW 2680
P (02) 6964 8011 | E griffith.nsw@middys.com.au
Mon-Fri 7am-5pm | Sat 7am-12pm



LEETON TEAM: (L-R): Anthony, Toby & Tara

Tara Hogan - Leeton Branch Manager

Tara has been at PowerPlus for 12 years, recently being promoted to manager of PowerPlus Leeton. Having formed meaningful relationships with staff and customers from both QLD and Leeton, Tara is wanting to gain as much knowledge as she can and experience multiple aspects of the business. She is an avid NRL fan having supported Manly for as long as Steve Matai has played.

Toby Reynolds - Counter Sales / Store Person

At PowerPlus for a little over 15 months, Toby has developed strong relationships with customers and staff and enjoys learning about new and innovative products. Toby has always had an interest in the Electrical Industry having studied Electrotechnology after completing his HSC. Outside of work Toby enjoys working out at the gym with his greatest accomplishment to date squatting 100kgs.

Anthony McDonald - Counter Sales

Having been at PowerPlus for 6 years, Anthony has progressed through the ranks from Store Person to Sales. Over the years Anthony has met new customers and established meaningful and rewarding relationships. Anthony has always been curious and captivated by the electrical industry and has always enjoyed working with people, hence starting at PowerPlus was a no brainer. Anthony is a big sporting fan and enjoys playing cricket, AFL, golf and tennis. Anthony has followed the Melbourne Demons in the AFL and the Sydney Roosters in the NRL for many years.



38 Acacia Ave, Leeton, NSW 2705
P (02) 6953 8011 | E leeton.nsw@middys.com.au
Mon-Fri 7am-5pm | Sat 8am-11am

WIN THE *Ultimate Trip*

DARWIN SUPERCARS AND FISHING WITH MIDDY'S RACING & BRYCE FULLWOOD

What a catch. Enjoy corporate hospitality at the Darwin Triple Crown & chill out the next day on a fishing charter with Bryce Fullwood & the BJR Team.



Spend \$500^{+GST} on any Prysmian product between 1 Apr - 13 May 2022 & go into the draw to WIN 1 of 8 Ultimate Fishing & Racing Experiences (valued at over \$5K per person)*

Spend \$500^{+GST} on one invoice for 1 entry into the draw

Earn extra entries for every additional \$500^{+GST} spent

All entries also go into draw to Win a \$50 BCF Card (2 per branch)

Bonus: Spend \$1,000^{+GST} on one invoice for 3 entries into the major prize draw & 3 entries into the branch minor prize draw

Major Prize Includes:

- ▶ One day Fishing Charter with Bryce Fullwood (20 June)
- ▶ Supercars Paddock Club Weekend Corporate Hospitality Package for one to the 2022 Repco Supercars Darwin Triple Crown (18 & 19 June)
- ▶ Four nights accommodation for one person (17-21 June) including all meals & beverages
- ▶ Return economy flights to Darwin

For full details and T&Cs visit:
middys.com.au/fishingpromo

*Open to all Middy's Electrical Group of companies account holders



NATIONAL BRANCH SUPPORT CENTRE:

EV MT WAVERLEY (VIC) 357 Ferntree Gully Rd (03) 7067 5555

MELBOURNE METRO:

L S AIRPORT WEST Cnr Matthews Ave & Fraser St 3042 (03) 9338 3611

S T BAYSWATER 882 Mountain Hwy 3253 (03) 9720 1755

S BLACKBURN 167 Whitehorse Rd 3135 (03) 9878 5566
Cnr Clare St

A I S BRAESIDE 252 Boundary Rd 3195 (03) 9580 7033
Near Citrus St

A S T BRUNSWICK 372 Victoria St 3056 (03) 9387 8333
Cnr Prentice St

BURWOOD 2 Edwards St 3125 (03) 9808 0800
Off Burwood Hwy, Opp. Reece

S T CAMPBELLFIELD 1592 Hume Hwy 3061 (03) 9359 6144
Cnr Bolinda Rd

I CARRUM DOWNS Cnr Dandenong-Frankston Rd & (03) 9782 5633
Frankston Gardens Dr 3201

S CHELTENHAM 1287 Nepean Hwy 3192 (03) 9584 9981
Near Goulburn St

CRAIGIEBURN 26-28 Potter St 3064 (03) 9305 7199
Off Sydney Rd

S T CRANBOURNE 35 Cameron St 3977 (03) 5996 8533
Near Cnr Sladen St

A F I S DANDENONG 45-47 Bennet St 3175 (03) 9792 0582
Cnr Wauchope Ln

I DANDENONG SOUTH 354 Frankston-Dandenong Rd (03) 9706 4266
Cnr Swift Way 3175

L S ELTHAM 294 Bolton St 3095 (03) 9439 5777
Near McDonalds

A S FRANKSTON 146 Beach St 3199 (03) 9783 8444
Near Kelman St

A I L S D HALLAM 1/76-78 Hallam Rd 3083 (03) 9284 2777

I HASTINGS 1 Bray St 3915 (03) 5979 3533
Cnr Frankston Flinders Rd

S T HAWTHORN HEIDELBERG 229 Burwood Rd 3122 (03) 9819 4199
489 Upper Heidelberg Rd 3084
Cnr Montgomery St

S KEILOR EAST 57 Slater Pde 3033 (03) 9336 2322
Off Keilor Park Dr

I S LAVERTON 2/16 Fitzgerald Rd 3026 (03) 9369 3444
Cnr Cherry Ln

EV L S D LILYDALE 34 Melba Ave 3140 (03) 9735 3199
Near Cnr Hutchinson St

S MELBOURNE 520 LaTrobe St 3000 (03) 9328 3233
Cnr Spencer St

A S MELTON 93-95 High St 3337 (03) 9743 9244
Cnr Norton Dr

L S D MOORABBIN 425 Warrigal Rd 3189 (03) 9555 0033
Near Cnr Keys Rd

S MORNINGTON 20 Diane St 3931 (03) 5975 9022
Near Frank St

EV T MULGRAVE 214 Wellington Rd 3168 (03) 9562 2033

SMARTCENTRE Behind Branch 1800 778 823

A S NARRE WARREN 91-93 Victor Cres 3805 (03) 8790 1766
Cnr Princess Hwy

I L S D OAKLEIGH 1/1609-1615 Dandenong Rd 3166 (03) 9568 2733
Cnr Ferntree Gully Rd & Lever St

S PAKENHAM 45-47 Bald Hill Rd 3810 (03) 5941 6133
Opp. Simplot

EV F I S PORT MELBOURNE 2 Thackray Rd 3207 (03) 9699 1588

PRESTON 152 Plenty Rd 3072 (03) 9484 0644
Cnr Brighton Ave

S RAVENHALL (DEER PARK) 13 Westwood Dr 3023 (03) 8348 5422

A RINGWOOD 53 New St 3134 (03) 9879 2600
Cnr Olive Gr

A S ROSEBUD 212 Boneo Rd 3940 (03) 5986 4744

ROWVILLE 2 Laser Dr 3178 (03) 9763 4922
Cnr Kelletts Rd

A L S D S SOUTH MORANG 318 McDonalds Rd 3752 (03) 9436 4800

S ST KILDA 7 Vale St 3182 (03) 9525 4366
Off Barkly St

S SUNBURY 1-9 Vineyard Rd 3429 (03) 9744 1000

S T SUNSHINE 46 McIntyre Rd 3020 (03) 9312 4111
Near Suffolk Rd

S THOMASTOWN 42 Wood St 3074 (03) 9465 8911
Near Hanrahan St

S WERRIBEE 11 Riverside Ave 3030 (03) 9741 5000
Near Greaves St

L WHITTLESEA 16/2398 Plenty Rd 3757 (03) 9716 0133

S WILLIAMSTOWN 392-394 Kororoit Creek Rd 3016 (03) 9399 3977
Cnr Fink St

I S D T YARRAVILLE 126 Somerville Rd 3013 (03) 9314 6800

VICTORIA COUNTRY:

BAIRNSDALE 479 Main St (Princes Hwy) 3875 (03) 5152 5144

I S BALLARAT 101 Mair St East 3350 (03) 5333 2377
Opp. Hungry Jacks

I S D T BALLARAT WEST (DELACOMBE) 8 Wiltshire Ln 3356 (03) 5332 0500

A L S D BENALLA 42 Sydney Rd 3672 (03) 5762 4099
Near Witt St

A F L S D T BENDIGO (GOLDEN SQUARE) 114 Hattam St 3555 (03) 5441 2707

A F I L S D T BENDIGO NORTH (EPSOM) 195 Midland Hwy 3551 Opp. ALDI (03) 5410 0011

L S D COLAC 55 Corangamite St 3250 (03) 5231 5600

A I L S D S ECHUCA 164 Ogilvie Ave 3564 (03) 5482 4633
Cnr Hovell St

F I S D S GEELONG Lawrence Pl 3220 (03) 5222 3855
Near Little Ryrie St

I GEELONG NORTH 316 Thompson Rd 3215 (03) 5277 3488
Near Morgan St

GISBORNE 44 Hamilton St 3437 (03) 5428 2822
Cnr Prince St

L S D S GROVEDALE 180 Torquay Rd (Surf Coast Hwy) 3216 (03) 5241 6999

A L S D HORSHAM 33 Hamilton St 3400 (03) 5382 5422

I LEONGATHA 1A Turner St 3953 (03) 5662 5977
Cnr Turner & Hughes St

I L MILDURA 47 Seventh St East 3500 (03) 5021 5922

A OCEAN GROVE 30 Everist Rd 3226 (03) 5255 1133

A SEYMOUR 8 Industrial Crt 3660 (03) 5799 0377
Off Wallis St

A F I S T SHEPPARTON 7-9 Vaughan St 3630 (03) 5822 2411
Cnr Wyndham St

STAWELL 200 Upper Main St 3380 (03) 5358 3088
Near Cnr Fisher St

A L S D SWAN HILL 59 Nyah Rd 3585 (03) 5032 5268

TORQUAY 36 Baines Cres 3228 (03) 5264 7522

A F I TRARALGON 11-13 Deakin St 3844 (03) 5174 6611
Off Princes Hwy

A L S D WANGARATTA 15 Tone Rd 3677 (03) 5722 1177

T WARRAGUL 31 Princes Way 3820 (03) 5623 6664

I L S D WARRNAMBOOL 1072 Raglan Pde 3280 (03) 5560 5677

A EV F I L S D T WODONGA 12 Osburn St 3690 (02) 6056 1699
Cnr Queen St

WONTHAGGI 6 Cyclone St 3995 (03) 5672 2600

A L YARRAWONGA 64-66 Benalla-Yarrawonga Rd 3730 (03) 5743 2644

SYDNEY METRO:

ALEXANDRIA 2/59-61 Burrows Rd 2015 (02) 9699 1633

S FAIRFIELD 53 Barbara St 2165 (02) 9727 0755

A T MINCHINBURY 5-7 Colyton Rd 2770 (02) 9677 1444
Opp. McDonald's

S T MOOREBANK 66-68 Heathcote Rd 2170 (02) 9600 8177

MEADOWBANK 28 Constitution Rd 2114 (02) 9809 7722

NORTHMEAD 5/185 Briens Rd 2152 (02) 8821 7500

S PADSTOW 125 Fairford Rd 2211 (02) 9773 1111

A PENRITH 2A Coombes Dr 2750 (02) 4722 3566

NEW SOUTH WALES COUNTRY:

A F ALBURY 421 Wagga Rd 2641 (02) 6025 1133
Opp. Sista Motel

A LAVINGTON 63 End St 2710 (03) 5881 5099

A DENILQUIN 21 Bradley St 2580 (02) 4822 7977

L GOULBURN 120 Yambil St 2680 (02) 6964 8011

S GRIFFITH 38 Acacia Ave 2750 (02) 6953 8011

S LEETON 202 Arthur Kaine Dr 2548 (02) 4003 7444

A L MERIMBULA 176 Hammond Ave 2650 (02) 5908 1830

A F I L S D T WAGGA WAGGA Cnr Stuart Rd

National Branch Network

AUSTRALIAN CAPITAL TERRITORY:

A L S D T Fyshwick 39 Quilpie Cres 2609 (02) 6280 0188
Cnr Newcastle & Cessnock St

NORTHERN TERRITORY:

L S D S COOLALINGA 43 Fairweather Cres 0839 (08) 8932 0739
EV S D S DARWIN 3 Charlton Crt 0820 (08) 8981 3333
(WOOLNER)
L S MIDDY'S Lighting 3 Charlton Crt 0820 (08) 8981 4270
DARWIN
I S D S PALMERSTON 25 Toupein Rd 0830 (08) 8932 1800
L S MIDDY'S Lighting 25 Toupein Rd 0830 (08) 8932 1800
PALMERSTON

QUEENSLAND:

A T MEADOWBROOK 17 Logandowns Dr 4131 (07) 3805 8025
A F S D T NERANG 2/138 Spencer Rd 4211 (07) 5527 4667
Cnr Indy Crt
T TINGALPA 8 Proprietary St 4173 (07) 3390 4811
A T VIRGINIA 49 Toombul Rd 4014 (07) 3256 7955
Opp. Walter St

SOUTH AUSTRALIA - ADELAIDE METRO:

EV S D T HINDMARSH 12 Susan St 5007 (08) 8340 9255
Cnr South Rd & Susan St
I SALISBURY NORTH 1 Playford Cres 5108 (08) 8182 3566
SOMERTON PARK 232 Brighton Rd 5044 (08) 8294 3088
Near Oaklands Rd
STEPNEY 79 Magill Rd 5069 (08) 8363 5444

TASMANIA:

F T HOBART 7 Effingham St 7009 (03) 6272 7355
(MOONAH)
L S D HOBART 2/21 South Arm Hwy 7018 (03) 6122 1877
EASTERN SHORE
(MORNINGTON)
A F LAUNCESTON 90 Gleadow St 7248 (03) 6331 6099
(INVERMAY)

WESTERN AUSTRALIA - PERTH METRO:

T BALCATT 11 Halley Rd 6021 (08) 9345 5545
Cnr Kirke Rd
T BIBRA LAKE 1/30 Salpietro St 6163 (08) 9434 5733
A I L S D EMBLETON 20 Embleton Ave 6062 (08) 6103 5111
NEW MUNDARING 11 Wandeara Cres 6073 (08) 9295 1939
Cnr Great Eastern Hwy
A T WANGARA 21 Dellamarta Rd 6065 (08) 9409 5088
Cnr Arrigo St
A L T WELSHPOOL 79 Welshpool Rd 6106 (08) 9350 6999

TRADING HOURS:

MON-FRI 7.30AM-5PM
SAT 8AM-12PM

Branch trading hours may vary see:
middys.com.au/branch-locator

BRANCH FEATURES:

A A/C Stockists
EV Electric Vehicle Charging Station
F Fire Product Stockists
I Industrial Stockists
L Lighting Display
SD Smart Display
S Open Saturday
T Telstra Product Stockists



KEEPING JOBS AND PROFITS IN AUSTRALIA

HAPPY
Mother's
DAY
SUNDAY 8 MAY



For up-to-date trade price changes visit: middys.com.au/trade-price-changes

Follow our socials

f MiddysElectrical
ig middyseletrical
in MiddysElectrical

MIDDY'S

MAG

Advertising & Editorial Enquiries
E marketing@middys.com.au
P (03) 8359 9559

Produced by Middy's Marketing

© Copyright Middy's 2022

All material published in Middy's MAG is copyright. Reproduction in whole or in part is not permitted without the written permission of the publisher.

Disclaimer:

The opinions expressed in this magazine do not necessarily reflect those of the publisher. Although all materials are checked for accuracy, no liability is assumed by the publisher for any losses due to the use of this magazine. Whilst all care has been taken in production, products and prices advertised will be on sale from the beginning of the promotional period or while stocks last. We reserve the right to substitute any of these products with similar products or vary pricing in extenuating circumstances. Advertised prices are for metropolitan areas only. Some products may not be available in some states. In regions outside the metropolitan area, prices may be slightly higher due to additional freight charges. Prices for fixed duration of promotion [E&OE] ABN 49 338 705 390. Trade customers only.

Middendorp Electric Co Pty Ltd.
357 Ferntree Gully Rd, Mt Waverley, VIC 3149

Easter Break

All branches are closed

Friday 15 April (Good Friday)

Saturday 16 April (Easter Saturday)

Monday 18 April (Easter Monday)

Trading resumes Tuesday 19 April



Outdoor like never before

Discover the
NEW Iconic® Outdoor range



CLIPSAL®



**Reduced
installation time**

New patented technology for a faster, weather protected finish.



**Proven
durability**

Designed for Australian outdoor living.



**Future-proof
design**

Clipsal Wiser™ smart connectivity and stylish finishes to suit your customers' needs.



Discover more

clipsal.com/IconicOutdoor

Life Is On

Schneider
Electric